



WELCOME
Company presentation



Established in 1945, Caprari is a global leader in the production of reliable, high-efficiency centrifugal pumps and electric submersible motors and in the creation of advanced solutions for managing the integrated water cycle.



Historical and solid Italian reality



Wastewater Transport and Treatment

The choice of value in sewage pumping

Electric submersible
sewage pumps

non stop **K+**
Series



Caprari International Patent



Vision

For all the professionals of the Integrated Cycle of Water, Caprari is :

- The benchmark for high reliability and high efficiency for clean water
- The leading specialist in surface and deep well clean water pumping systems
- Reference in agricultural applications worldwide
- The choice of value in sewage pumping and drainage
- Specialized partners in heavy duty applications

APPLICATIONS > Professional agriculture



Extensive Irrigation



Land Reclamation



Anti Frost

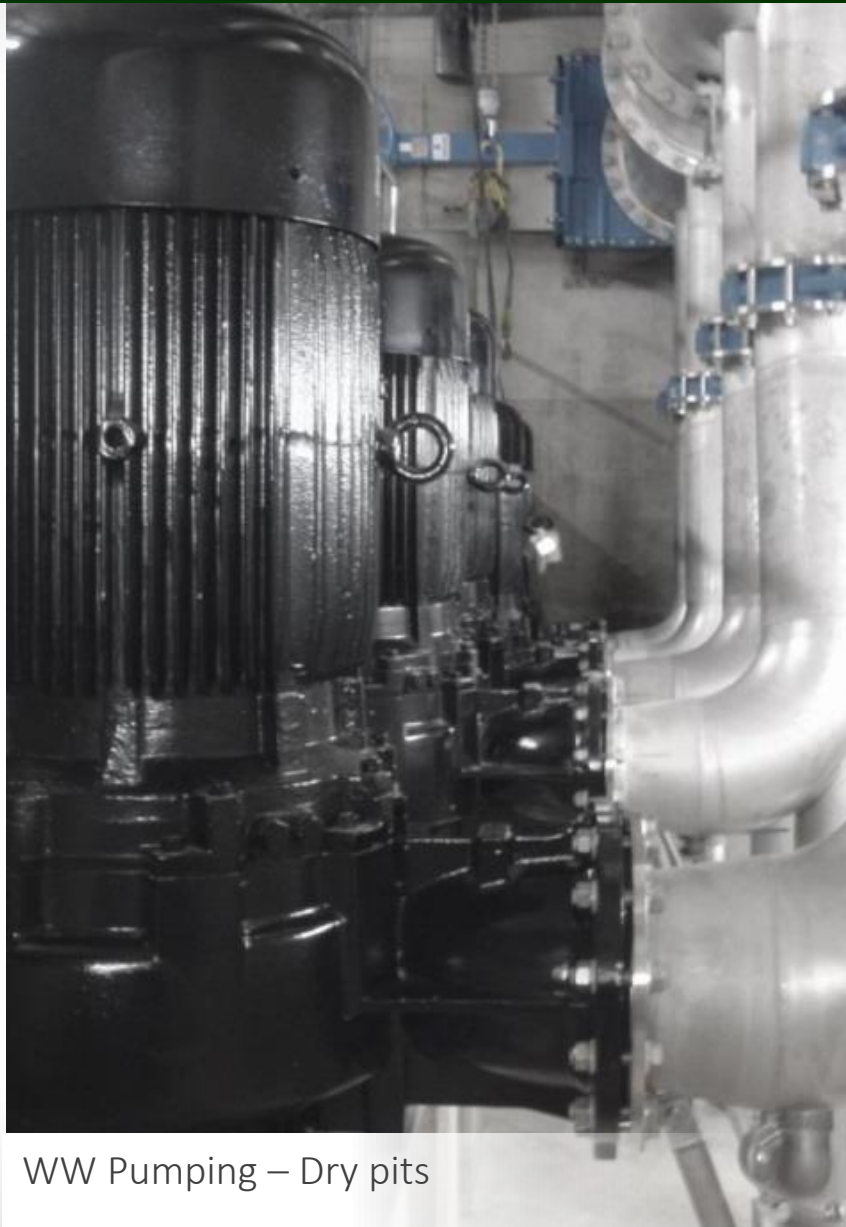


Green houses





WW Pumping - Transport



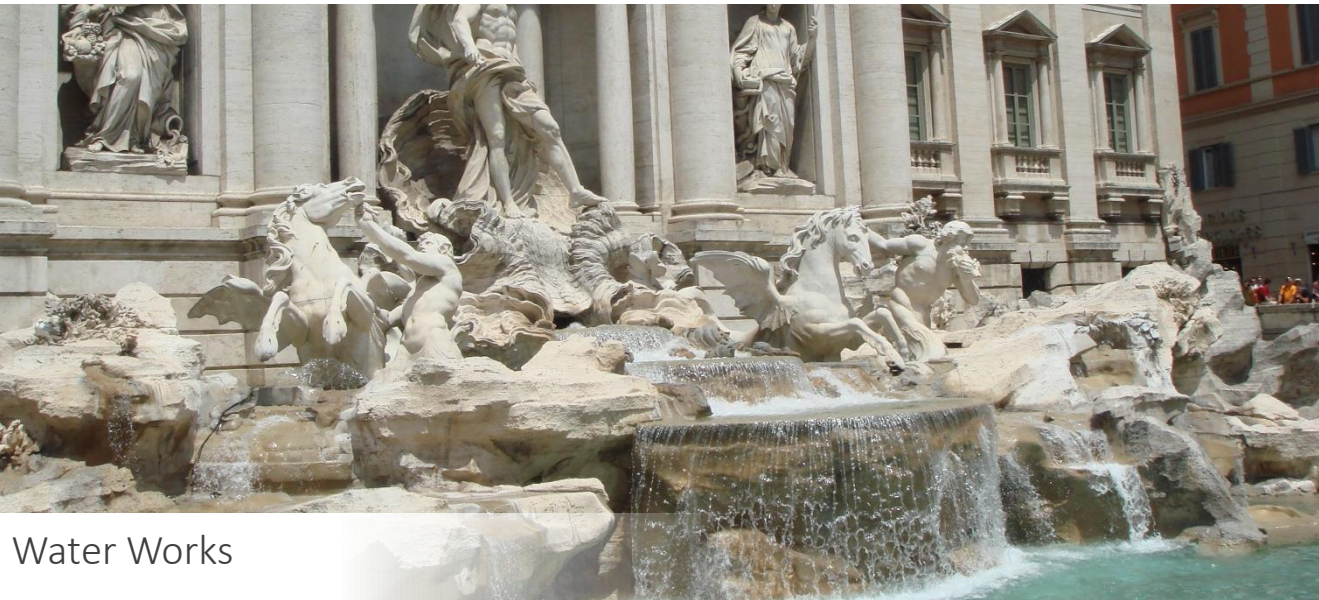
WW Pumping – Dry pits



WW Pumping – Treatment



Stormwater Collection & Pumping



Water Works



Underground Water Collection & Pumping

APPLICATIONS > Industrial applications



Fire Fighting for industrial applications



Steel Farms



Power generation



Pulp and Paper

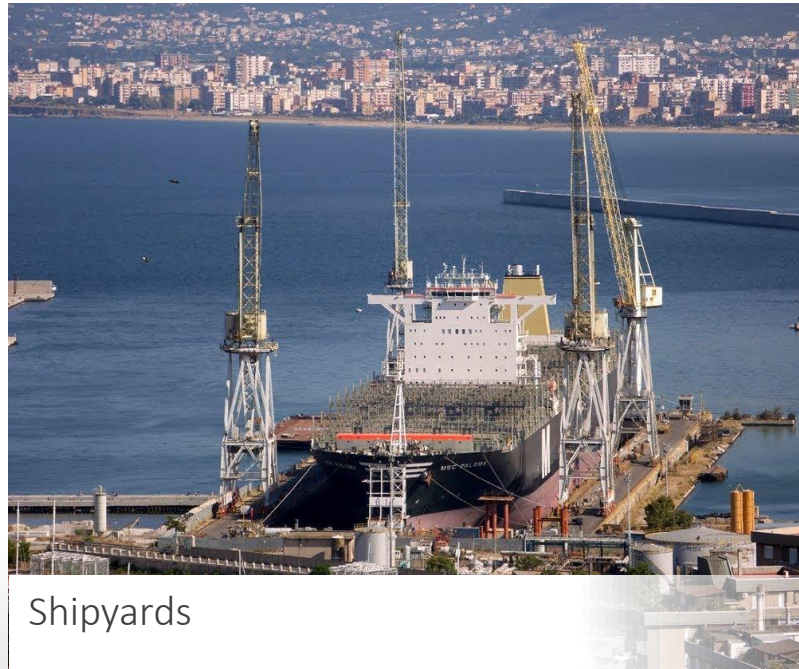
APPLICATIONS > Heavy Duty Applications / Special Industries



Offshore platforms



Mining



Shipyards



Snowmaking

Mission

- is an industrial group **specialized** in **High Efficiency pumping solutions** for the **Integrated Cycle of Water** (collection, distribution, boosting, treatment)
- is placing at the core of its mission the **Customers'** satisfaction, the **Human Resources' competences** and the respect for the **Environment**.

PEOPLE

630
Employees

14 years

Average age employed
in the company =

Experience

Membership

Solidity

VALUES

Transparency

Passion

Social Commitment

Respect

Professionalism



MODENA Plant
Pumps



RUBIERA Plant
Center of Excellence for
Submersible motors



**POLMOT MOTOR
MAKINA A.S.**
Konya - TURQUIE
Submersible motors



COMPANY > Subsidiaries



IN **FRANCE**
SINCE 1969
CAPRARI FRANCE S.A.S.



IN **SPAIN**
SINCE 1980
BOMBAS CAPRARI S.A.



IN **UK**
SINCE 1986
CAPRARI PUMPS (UK) LTD



IN **GERMANY**
SINCE 1996
CAPRARI PUMPEN GMBH



IN **PORTUGAL**
SINCE 2004
CAPRARI PORTUGAL LDA



caprari



IN **AUSTRALIA**
SINCE 2004
CAPRARI PUMPS
AUSTRALIA PTY LTD



IN **GREECE**
SINCE 2005
CAPRARI HELLAS S.A.



IN **TUNISIE**
SINCE 2007
CAPRARI TUNISIE S.A.



IN **CHINA**
SINCE 2010
CAPRARI PUMPS SHANGHAI
CO. LTD.



A strong network of
distributors, agents
and **partners**
engaged for over 50
years in **96 countries**

DOMESTIC NETWORK

- Caprari Headquater
- 17 Service Centres

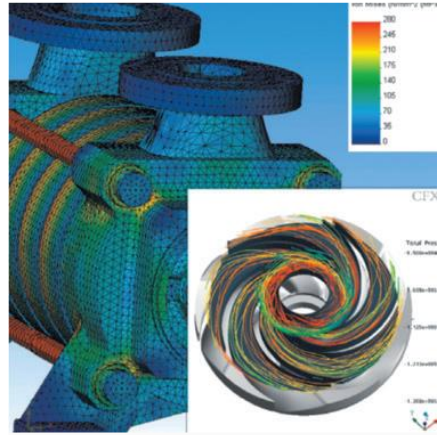
INTERNATIONAL NETWORK

- Over 100 reliable loyal partner in the world



Advanced R&D process through

Investments in 2018 amounted to 5 % of turnover



Advanced hydraulics design
(i.e.: **WinSIPI** exclusive proprietary software
for hydraulic 3D design)



CAD 3D CAE

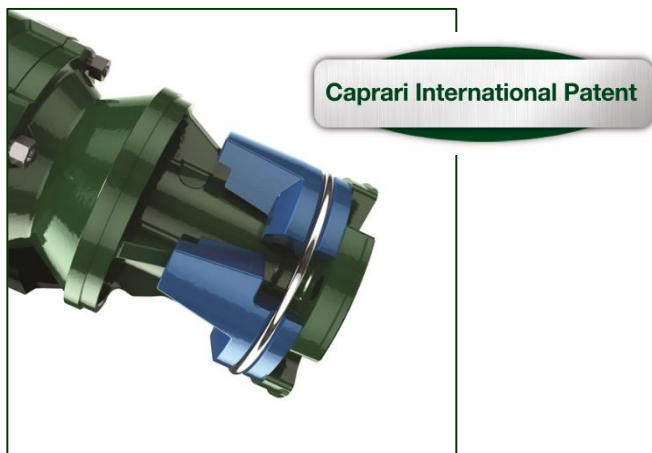


Computer-aided mechanical and **fluid**
dynamic analysis of the products



RAPID PROTOTYPING

Patents



Defender®

CAPRARI Solution for
electrochemical and galvanic
corrosion

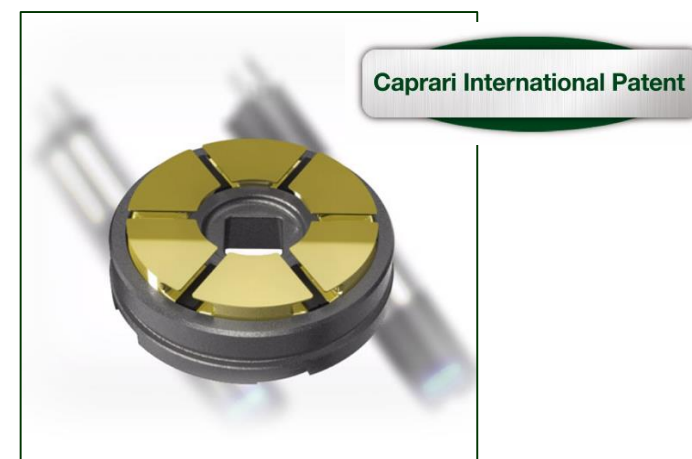
- Maximum **protection**
- **increase the life** of the cast iron pump and the protect the cast iron and SS components of the motor.



MotorProtector

CAPRARI PUMP + MOTOR
Protected coupling area to grant:

- **give motor seal longer life**
- **avoid exposition** to wear of end shaft
- Sistema di elevata protezione

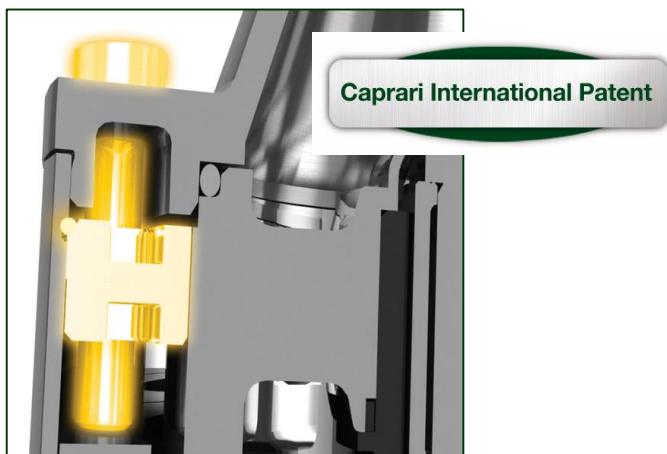


NEW HT-Bearing

strong resistance to the axial thrust
extreme reliability

- Lower number of components
- Better performances
- the bearing has got higher load at least 3 times the load of the Mitchell type
- Higher load for the same dimension
- Higher reliability

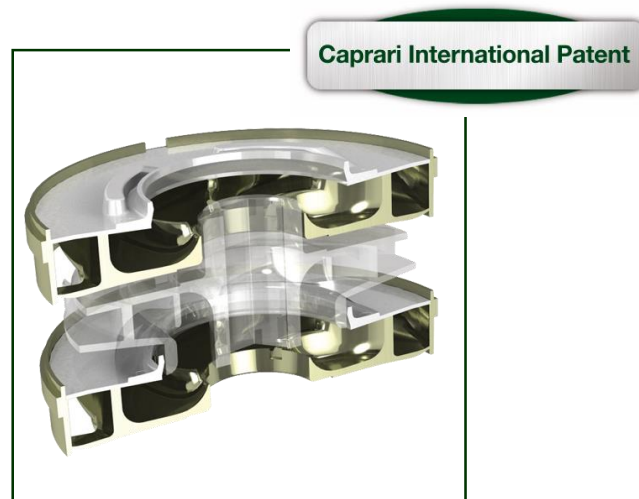
Patents



Smart-Fix System

Valve-pump casing fastening system:

- ensures **maximum safety** even at high pressures and external stresses.



Sand-Out System

The new wear ring system ensures

- **long life**
- **reliable** operation even when the pumped fluid contains large amounts of sand and solids.
- provides a **reliable starting surge**,
- thereby **avoiding maintenance costs** due to faulty operation



Bearings protected

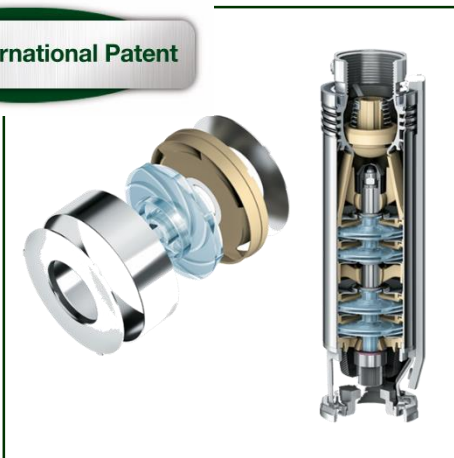
New lip bearing **avoiding re-circulation** of liquid

Against the entrance of sand

Max content of solid:
from 40 g/m³ to 100 g/m³

Patents

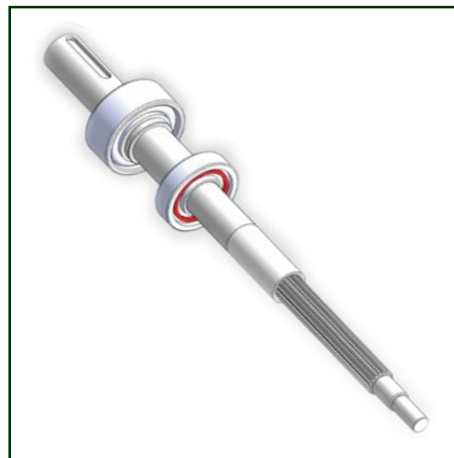
Caprari International Patent



Easy-check

The assembly between the valve casing and the outer shell is achieved by means of an innovative threading system EASY-CHECK, guarantee

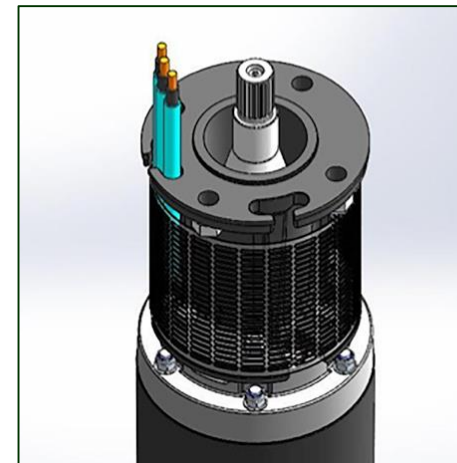
- long-life
- easier to disassemble
- easier to inspect and maintain.



New coupling

Process for impellers with precision spline profile for optimal distribution on shaft and hub:

- optimizes resistance to mechanical stress to obtain
- maximum reliability
- durability.



Connectoflex

Kit for the coupling of Caprari submersible motors to wet ends with different connections:

- maximum flexibility
- reliability.

Patents



New sewage
pump

DRYWET SYSTEM

S1 Function in dry chamber

IE3

Caprari International Patent



The new K+ Energy electric pumps are designed to **ensure a premium efficiency** level thanks to motors in IE3 efficiency class.

The Energy range features the new patented “DryWet” cooling system, which allows its use both in the tank and in the dry chamber:

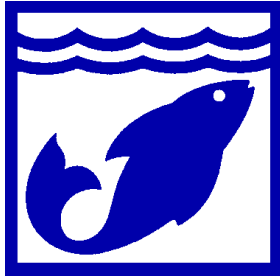
- Reliability
- Robustness
- Duration features

The **plug**:

- **prevents** humidity from entering the motor
- **reduce** maintenance times.

Probe in the oil chamber also for ATEX version.

PRODUCT RANGE



Water Collection
and Distribution



Boosting and Distribution
of surface water



Wastewater Transport
and Treatment

MATERIALS

Cast Iron

Bronze

Stainless
steel

Duplex

Super
Duplex

